

# DOWNLOAD GUIDELINE

## Sayfr WE 2D

1. Go to your respective app store, search «WE&TEAM Picker» and download the app.

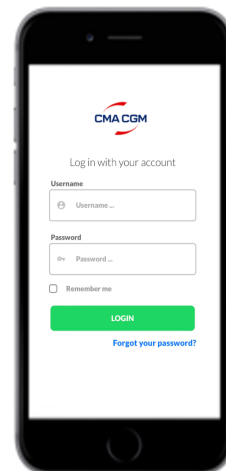


2. Open the app and type in «CMACGM» when asked for a company code.

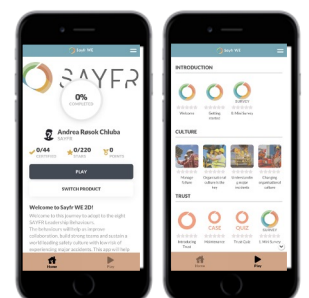
*Log in with following credentials:*

**Username:** your email address

**Password:** cmacgmcompany



3. The first time you log in, you will be asked to create a new password. This personal password is the one you use the next time you log in to any of the SAYFR apps (i.e. Sayfr WE and Sayfr TEAM). If you have already made a personal password for any app, this is the password that applies when logging in.

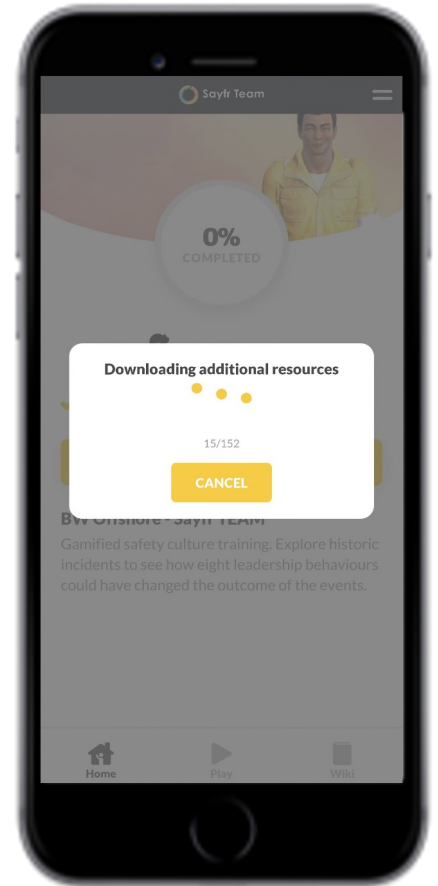


**Recommendation.** We highly recommend you to tick off the ‘remember me’ function, to avoid having to log in with username and password every time you use the app.

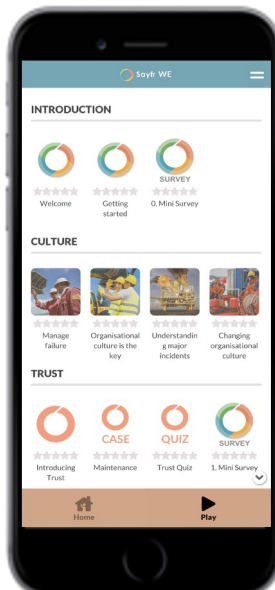
## Sayfr WE 2D (continued)

4. **IMPORTANT!** When logging in the first time the app will ask you to **download additional resources to enable playing with limited internet access**. Make sure you do not cancel this process. You will then be able to play with limited internet access. You should have stable internet access while doing this.

If you by any chance cancel this process, or do not get this message prompted on first time log in, click on the two horizontal bars in the top right corner, toggle on (or off and on if applicable) 'offline mode', log out and back in and the message should be prompted.



5. **Start playing!**



# RECOMMENDED SETTINGS

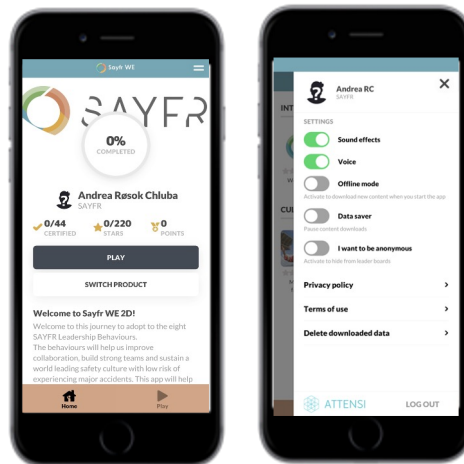


## Sayfr WE 2D

(“WE&TEAM Picker” in Google Play Store and Apple Appstore)

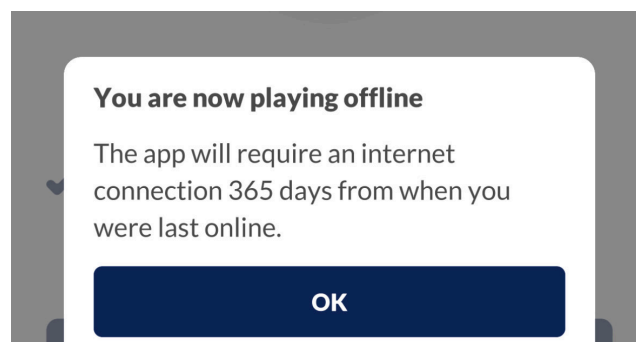
- **Data Saver:** We recommend you to turn on “**data saver**” to prevent the app from downloading additional content while playing in offline mode. Enabling this function will lead to updates not being automatically downloaded to the app.
- **Offline Mode:** We recommend you to turn on “**offline mode**” to make sure all content is downloaded on first log in. Enabling offline mode will lead to the app downloading all the resources.

Press the menu icon in the top right and make sure “offline mode” and “data saver” is toggled on. If not, the downloading of resources was most likely interrupted.



**! For onboard users:** If you have logged in successfully, ticked off on the ‘remember me’- function and downloaded all the necessary content you will be able to use the app without any WIFI at all for up to **365 days**. It is very important to log in and use the app with a minimal amount of WIFI after 365 days to send all your play through data and update the scoreboards.

When you log in without WIFI, a message will pop up as below. This is just a message to remind you to make sure to connect to WIFI within 365 days. To proceed, click ‘OK’ and the pop-up message will disappear. This is not a request to download any content.



## \*MINIMUM REQUIREMENTS FOR RUNNING THE GAME

### Sayfr WE 2D

(“WE&TEAM Picker” in Google Play Store and Apple Appstore)

#### **Android:**

Android 6 or higher

CPU: Quad core at 2GHz or better

GPU: Shader Model 3.0 compatible

Memory: 2 GB RAM

Hard drive: 200 MB free disk space (150 MB  
download size)

#### **iOS devices:**

Device: iPhone 6S or higher, iPad Air 2 or higher

OS: iOS 11 or higher

Memory: 2 GB RAM

Hard drive: 200 MB (150 MB download size)